



Bridge Investment Opportunity for Business Angels & Family Offices

GATE2BRAIN[®]

OUR SPONSORS & PARTNERS



INSTITUTE
FOR RESEARCH
IN BIOMEDICINE



SJD

Sant Joan de Déu
Barcelona · Hospital



UNIVERSITAT DE
BARCELONA

Spin-off

MIND
THE
GAP



Sabadell
BStartup

European
Innovation
Council



Funded by
the European Union



Financiado por
la Unión Europea
NextGenerationEU



DOCTORATS
INDUSTRIALS

ACCIÓ
Catalonia
Trade & Investment



Generalitat
de Catalunya



Health

Funded by the
European Union



Ajuntament de
Barcelona



Barcelona
Activa

"WHY INVEST IN GATE2BRAIN?"

Breaking Barriers, Driving Innovation Forward



Dr. Meritxell Teixidó

CEO / CSO

A chemist with 20 years of experience in peptide design, synthesis, and the discovery of peptides crossing the blood-brain barrier (BBB).

Proven expertise in leading high-performance teams and executive management.

Dear Business Angels and Family Offices,

As CEO and co-founder of Gate2Brain, I am reaching out at a key moment for an initiative that offers a significant investment opportunity while also aiming to transform the lives of young patients.

Our **pediatric brain tumor research program**, led by experts in biotechnology and pediatric neuro-oncology, has recently secured **orphan drug designation for G2B-002 from the EMA**. However, progressing from lab to patient requires essential financial support.

Gate2Brain's technology platform is a breakthrough, enabling therapies to cross the blood-brain barrier and in the first product, target childhood brain tumors with greater precision. We believe G2B-002 could revolutionize treatment for this devastating cancer.

We are seeking your support in this **bridge fundraising round** to prepare for clinical trials at Hospital de Sant Joan de Déu, Barcelona. This funding will accelerate regulatory processes, ensure preclinical production, and advance our product pipeline.

Business angels and family offices look for both financial returns and social impact, and this is where our goals align: **transforming lives through innovation**. Pediatric cancer can't wait, and your investment will bring both economic potential and hope to families seeking new therapeutic options.

We look forward to discussing how your participation can help us move closer to effective solutions for childhood brain tumors.

Thank you for your time and consideration.

Sincerely



Meritxell Teixidó

C-Level Team



Dr. Gloria Sanclimens

"Gate2Brain allows me to apply my passion for science and innovation with an amazing team to create solutions that improve lives, while constantly learning and growing in a field that is pushing the boundaries of human health and technology."

Chief Operating Officer
Chemist with extensive experience in the pharmaceutical industry and in-licensing procedures

"My life philosophy has always been 'Give to receive,' and Gate2Brain is the personification of that philosophy."



Esther Riambau

Business Development Advisor
18 years of experience in tech transfer and business development



Dr. Ángel Montero

"This project brings me what I value the most in research: *complementary partners create a radically new technology which results in a concrete and ambitious breakthrough that clearly surpasses the previously available technology*"

Chief Clinical Officer
Multidisciplinary translational pharmacist specializing in pediatric oncology and clinical trials



Andrés Morales

"What engaged me with this project is the potential to deliver efficiently old and novel compounds into the brain with the goal of improving the life of people suffering from devastating diseases"

Chief Medical Officer
 Pediatric neuro-oncologist specializing in brain and spinal cord tumors

"Gate2Brain encompasses all the elements that inspire: health, children, technology, science, and the potential to change the world."



Sergi González

Chief Financial Officer
 Expert in business development and financial strategies

What stands out & resonates with the Team & Advisors at G2B

Not only outstanding scientists & entrepreneurs but people with big hearts who genuinely care about improving the lives of others in need

Contributing to the development of new treatments for diseases currently incurable

A common vision and goal: to improve the quality of life of the patient

A team: comitted, enthusiastic, highly professional and visionary

The belief that G2B platform can lead to a breakthrough in the treatment of brain tumors and to actively contribute to its success

A rational and solid hope for people suffering cancer related diseases

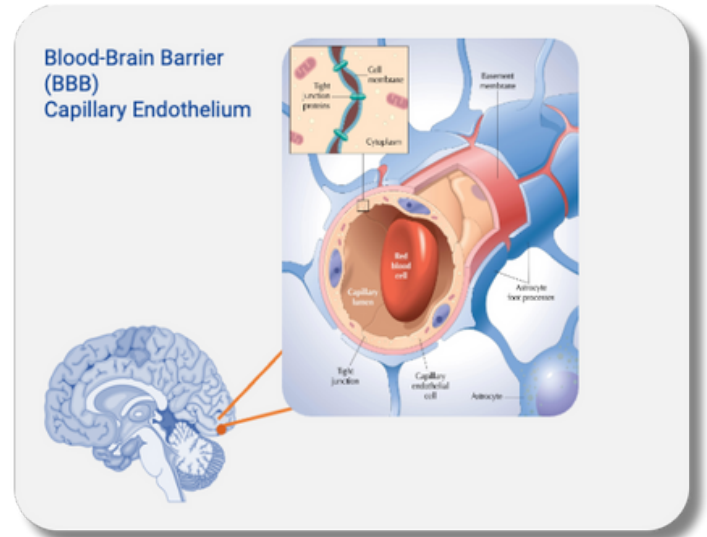
Who are we?

Gate2Brain (G2B) is a biotech company, founded in July 2020 as a **spin-off from the Institute for Research in Biomedicine (IRB), the Universitat de Barcelona (UB) and the Hospital Sant Joan de Déu (HSJD)**, following over 15 years of R&D efforts. Its technology platform is based on a set of patented small peptide-shuttles that have the capacity to cross the blood-brain barrier (BBB) and enter the brain, carrying therapeutic cargoes to the central nervous system, that otherwise could not reach the brain unaided.

The Problem

Central Nervous System (CNS) disorders affect 13% of the general population, yet effective treatments are few. **98% of candidate CNS drugs fail to penetrate the BBB**, and so do not even reach the brain, resulting in loss of efficacy.

Pediatric brain tumors, such as pGBM and DIPG (constituting 25% and 10% of all childhood brain tumors, respectively), that show an intact BBB, are the first indications that will benefit from the technology. Currently, **there is no cure for these tumors, and deterioration is rapid**. The use of this technology could also have a broader impact when applied to **adult brain tumors** with intact BBB and other **CNS diseases** such as Alzheimer's, Parkinson's, etc.



The Asset – G2B-002

G2B-002, our **most advanced product and proof-of-concept (PoC)** of the technology **consists of a peptide-based shuttle delivering an anticancer agent**, that has proved to be a great tool **to fight fatal pediatric brain tumors with intact BBB** such as pGBM and DIPG pointing them as first indication benefiting from the technology. These results are potentially **scalable to other therapeutic cargoes and biological barriers**, with far-reaching clinical implications for G2B. Pediatrics first, but not only!

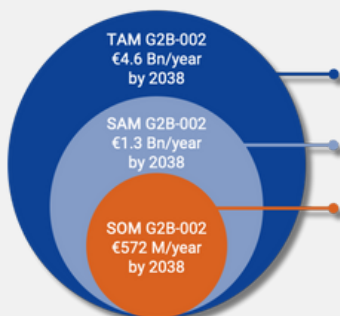
Platform Technology

G2B technology offers an adaptable technology platform for **non-invasively delivering drugs to the brain**. Its **ability to cross the BBB** and deliver a wide range of drug modalities makes it **suitable for a broad range of CNS diseases both in adults and children**. The technology demonstrates superior stability and adaptability compared to competitors' and has strong IP protection (currently comprising six patents) and with the potential for creation of novel IP with each new drug.

The Asset: G2B-002

Pediatric First Clinical Trial (2026-2028)

Adult Brain Tumors & Other Pediatric Clinical Trials (2029+)



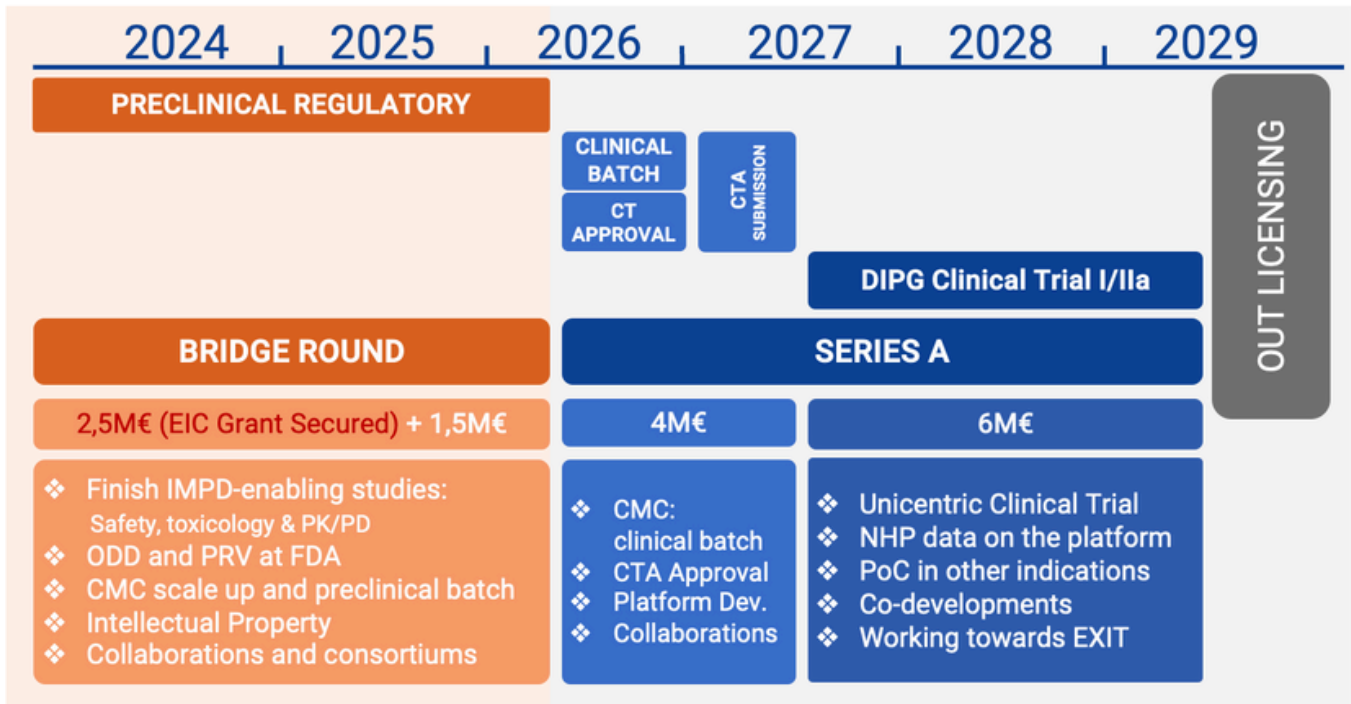
The total market for brain tumor and CNS therapies (e.g., Alzheimer's, Parkinson's, ...)

The total market for brain tumor and CNS therapies in selected geographies

The serviceable obtainable market for brain tumor and CNS tumor therapies by 2038.

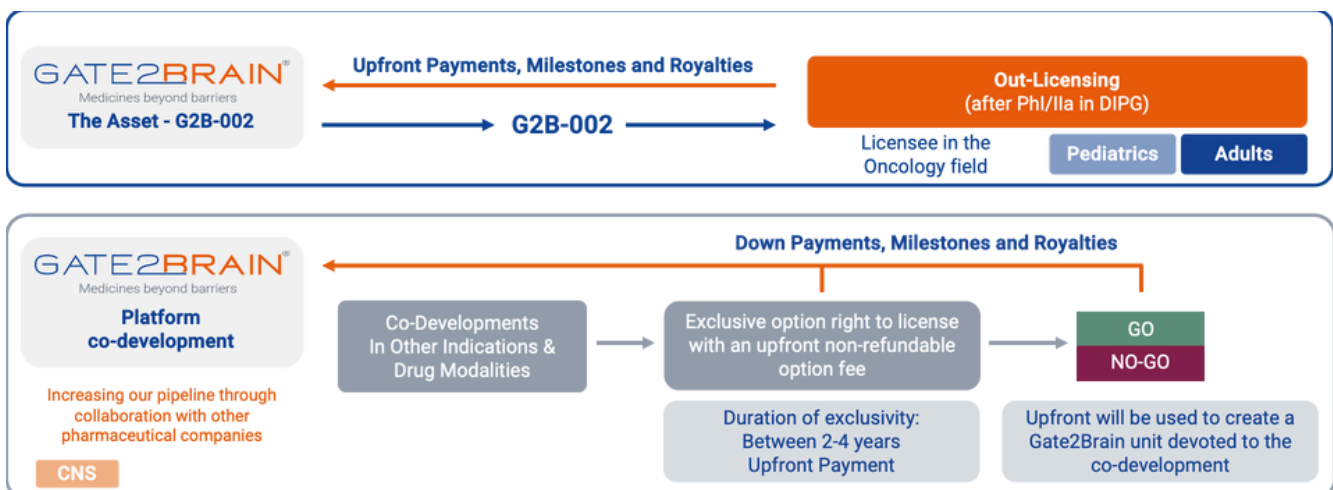
- Broad and scalable market.
- Strong IP protection (6 patents).
- Unique non-invasive drug delivery platform, suitable for:
 - Pediatric and adult brain tumors.
 - A broad range of CNS diseases.

Investment Needs



- **G2B has open a Bridge Round of €1.5M** to complete G2B-002 preclinical regulatory work and trigger EIC milestones
- Q1 2026, a **10 M€ Series A**
 - 4M€: Clinical Batch and CT approval
 - 6M€: DIPG Unicentric CT PhI/IIa in Barcelona HSJD.
- **50% of Series A** as **co-investment of EIC**
- **After the Clinical Trial PhI/IIa** validating the platform and as a PoC in pediatric brain tumors, **G2B-002 will be mature enough to be out-licensed (2029).**
- **Clinical Trials in other pediatric and adult tumors are foreseen.**

Business Model



Sustainability Strategy

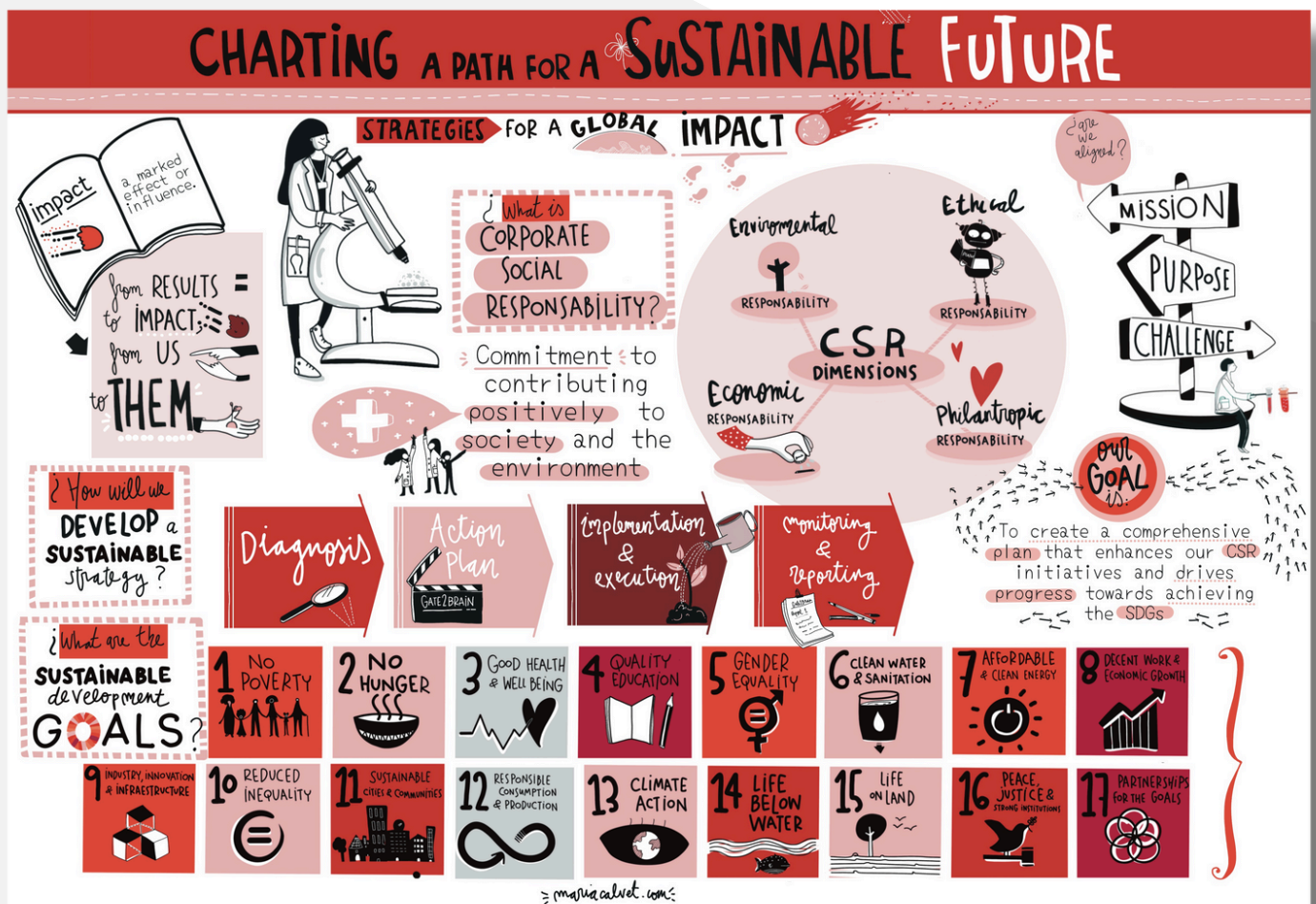
Aligning CSR with the UN's SDGs

This document marks the start of our efforts to align Gate2Brain's CSR initiatives with the UN's Sustainable Development Goals (SDGs).

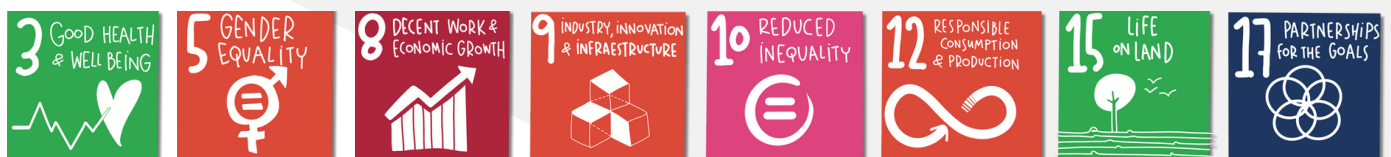
Our past CSR activities, though modest, have proven reliable and impactful, and we are now building a sustainable and measurable strategy to maximize this impact.

Currently, in the **diagnostic phase**, we aim to:

- ✓ Identify CSR actions
- ✓ Align them with the SDGs
- ✓ Set clear, measurable sustainability objectives to increase our positive impact



HERE, WE PRESENT THE SUSTAINABLE DEVELOPMENT GOALS (SDGS) AND THE OBJECTIVES WE HAVE CHOSEN TO FOCUS ON AS PART OF OUR CURRENT AND MID-TERM CSR STRATEGY



***Do not hesitate to ask for further information

Awards & Recognitions

2021

Winner of the Barcelona Activa pre-acceleration competition

South Summit Valencia, Health & Wellbeing Competition: Most Disruptive Startup



Breaking News

EMA Grants:
Orphan Drug Designation to G2B-002

Paving the Way for Rare Disease Breakthrough!

2022

Innovative SME seal obtained by Spanish Ministry of Science and Innovations

Biotech New Frontiers Award, Portugal

Women StartUp Awards Spain, G2B's CEO, Winner Inspiration Category

2023

SME Status by European Medicines Agency

Frontiers of Innovation and Entrepreneurship (FIE) program hold at MIT Sloan School of Management

EIT Health Wild-Card Runner-up

Senén Vilaró Award from Social Council of UB & FBG for the best innovative company of the year

2024

Talent Prize by Impulsa Talentum Foundation

Winner of the Innovator's Pitch Challenge Award at Resi Europe



Decalogue of Why Now is the Moment to Invest in Gate2Brain?

It is an Opportunity for Business Angels and Family Offices to Join Gate2Brain Endeavour Before Valuation Increase Related to the Starting of the Clinical Trial PhI/IIa

Because the Created Impact will Go Beyond Oncology, as CNS Diseases Require Technologies to Send Drugs to the Brain

Because Pediatric Brain Tumors Are a High Unmet Medical Need

Because G2B-002 as a Groundbreaking Treatment for Brain Tumors Could Disrupt the Field

Because Though Pediatric Brain Tumors Represent a Niche Market Compared to Adult Cancers, Treatments Developed for These Patients Can Be Expanded into Larger, Related Markets (e.g., Adult Brain Tumors), Offering Long-Term Growth Potential

Because We Have Recently Been Granted the Orphan Drug Designation for by EMA

Because This is Also a Social Impact and Purpose-Driven Investment Contributing to Saving Children's Lives and Creating Therapeutic Opportunities in a Critical Healthcare Field

Possibility of Tax Relief once Converted into Capital

Because Different Exit Scenarios Could Open in the Following Years

And Why Not....Because...
CHILDREN REPRESENT A QUARTER OF OUR PRESENT BUT 100% OF OUR FUTURE

**PEDIATRIC FIRST,
NOT PEDIATRIC ONLY!**





Key Takeaway Notes



Be a part of something transformative
your investment can be the key to unlocking
new possibilities in pediatric cancer care



GATE2BRAIN[®]

www.gate2brain.com